



# **Software User's Manual**

**OEM version**

---

**Table of Contents**

<b>Installation</b> .....	2
<b>Software Installation</b> .....	2
<b>Custom Setup Type</b> .....	3
<b>Install IP camera(s)</b> .....	3
<b>Install the UPnP service on your computer</b> .....	3
<b>Install IP Camera(s)</b> .....	3
<b>Configuration</b> .....	4
<b>Setting – General</b> .....	5
<b>Setting - IP Camera</b> .....	8
<b>Setting - I/O Device</b> .....	12
<b>Setting - PTZ Config</b> (only for PTZ product series).....	13
<b>Setting - User Account</b> .....	14
<b>Log Viewer</b> .....	15
<b>Backup</b> .....	17
<b>Erase recorded information from the system</b> .....	20
<b>Main Console</b> .....	21
<b>On Screen Menu</b> .....	23
<b>Start</b> .....	24
<b>Playback</b> .....	27
<b>Playback Console</b> .....	28
<b>Day-Time Panel</b> .....	30
<b>Enhancement</b> .....	31
<b>Filter Setting</b> .....	31
<b>Save Video / Save Image</b> .....	32
<b>Print / Backup</b> .....	33
<b>Log Viewer</b> .....	34
<b>Schedule</b> .....	36
<b>Day Mode</b> .....	37
<b>Load preset Modes</b> .....	37
<b>Manually insert a new schedule</b> .....	39
<b>Week Mode</b> .....	39
<b>Contact ZAVIO</b> .....	40

# Installation

## Software Installation

**Step 1:** Insert the Software CD.

**Step 2:** Run dxdiag.exe from start menu 'Start-> Run' to check your DirectX version. If the installed version is less than 9.0, install DirectX 9.0 from the CD-ROM directx9/ directory.

**Step 3:** Run Setup.exe from the CD-ROM root directory and follow the onscreen instruction to complete installation.

---

## Config

### Custom Setup Type

You may install the system to the directory of your preference and choose which feature(s) you want to install to the PC.

*Hint:*

You may, for instance, install only Playback and/or LiveView on the PC at home or other remote site from which you do not install the camera but are going to watch them remotely.

### Install IP camera(s)

The default UPnP (Universal Plug & Play) function allows the software to discover ZAVIO Video Server automatically without manually setting the IP address and other configurations. If you have not installed the UPnP service on your computer, please follow the steps.

#### Install the UPnP service on your computer

**Step1** : Open the Control Panel from the **Start Menu** and select **Add/Remove Programs**.

**Step2** : Select **Add/Remove Windows Components** and open the **Networking Services** section.

**Step3** : Click **Details** and then select **UPnP** as the service to add.

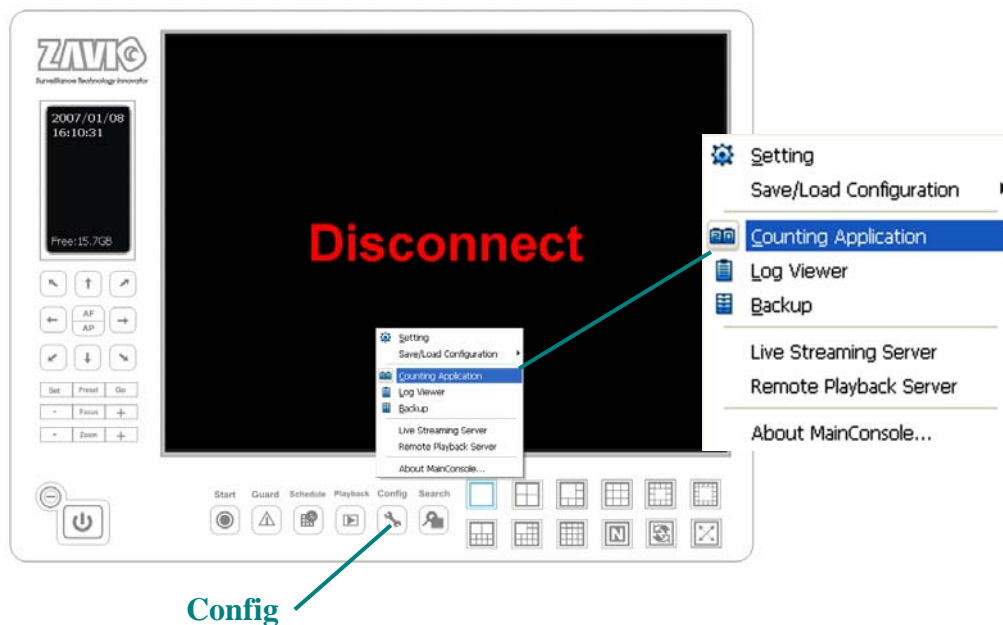
#### Install IP Camera(s)

**Step 1:** Connect the IP camera(s).

**Step 2:** Check the network between the IP camera(s) and the system.

**Step 3:** Add the IP camera(s) to the system.

# Configuration

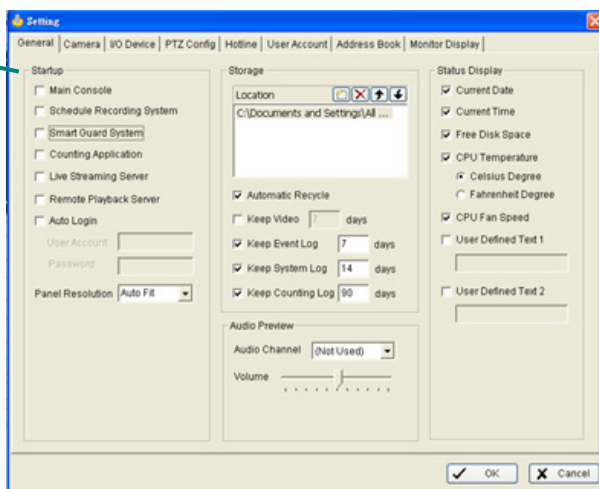


**Click the Config icon, select from the pull-down menu and open the Configuration panel.**

---

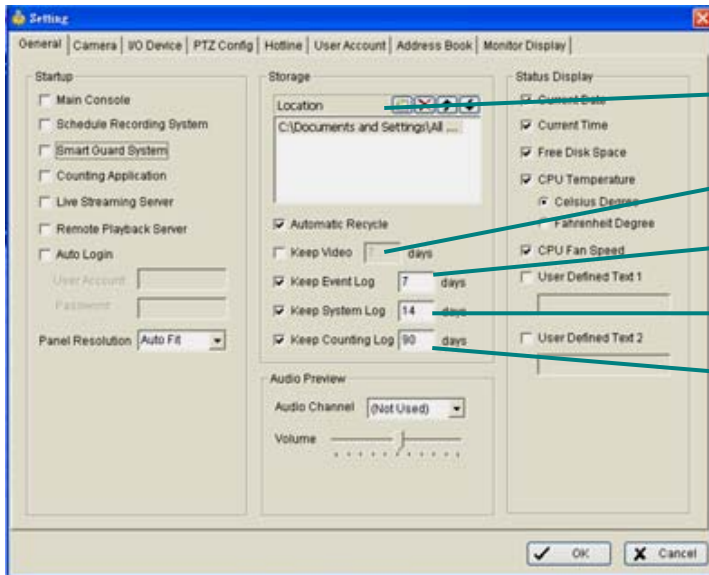
**Config****Setting – General**

Startup



**Startup:** Check the box and activate the functions as the system starts. You may start/stop the function in the Monitor panel on the Main Console.

## Setting – General



Storage

Location

Keep Video

Keep Event Log

Keep System Log

Keep Counting Log

### Storage:

**Location:** Assign the path and folder in which the system saves the files.

**Automatic Recycle:** The system will automatically delete out-dated data to save storage space.

**Keep Video:** Deletes video records that are older than the number of days you set.

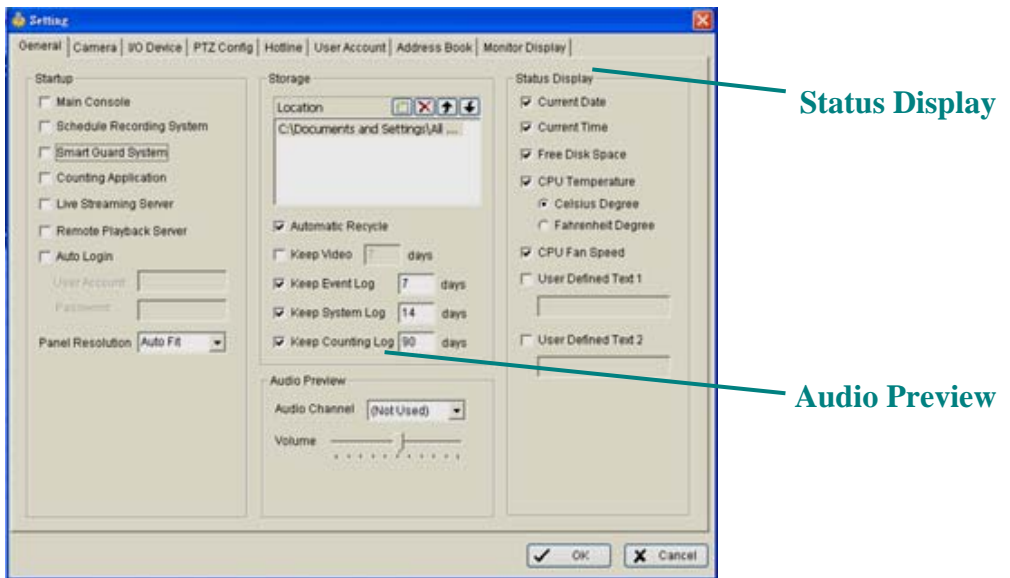
**Keep Event Log:** Deletes event log data that is older than the number of days you set.

**Keep System Log:** Deletes system log data that is older than the number of days you set.

**Keep Counting Log:** Deletes counting application data that is older than the number of days you set.

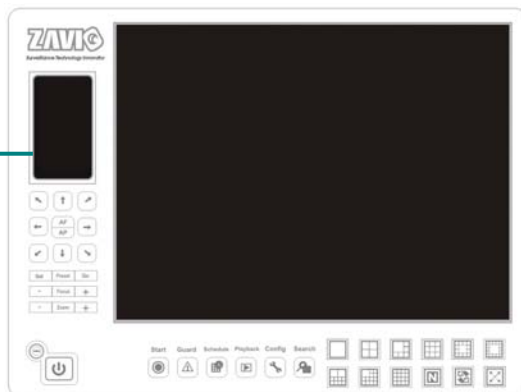
Config

Setting – General

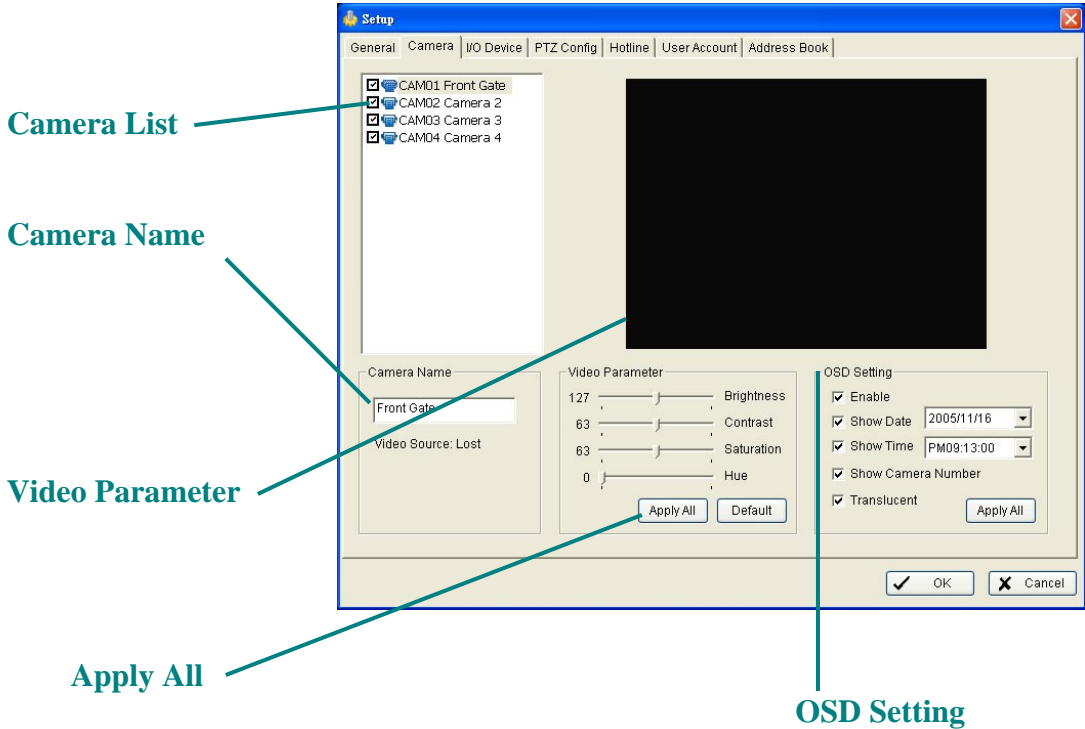


**Audio Preview:** Assign the audio channel to preview and adjust sound volume.

**Status Display:** Select what information you want to show on the information display of the Main Console.



## Setting - IP Camera



### Camera List:

The camera(s) connected to the system will show on the panel, click on the name of the camera and you can adjust the settings.

**Camera Name:** Name the camera for your convenience.

**Video Parameter:** Adjusts brightness, contrast, saturation, and color hue.

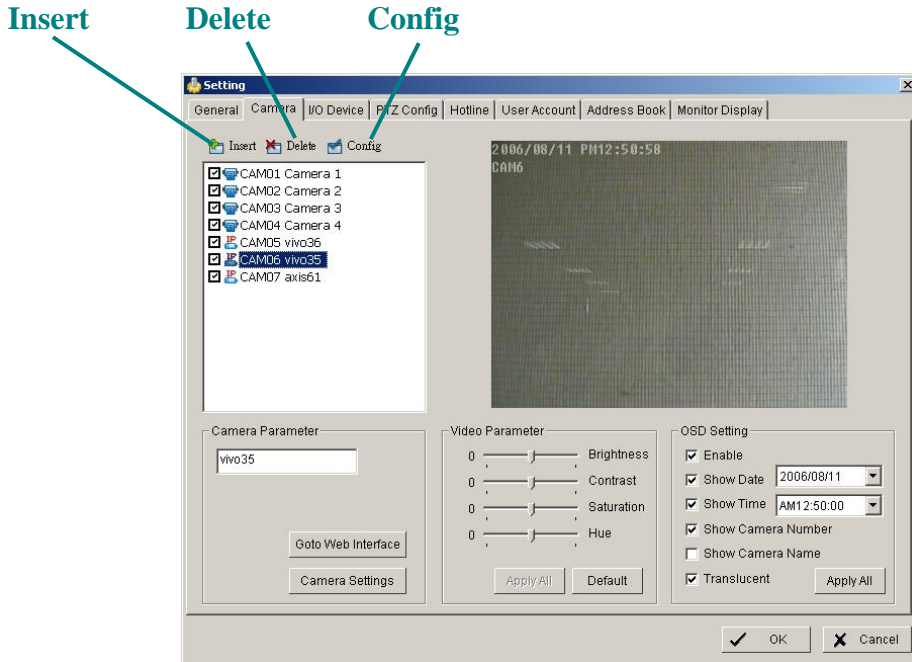
**Apply All:** Click this button to apply the setting to all the cameras.

### OSD Setting:

Select what you want to put in the On Screen Display, showing on the sub-screen of the camera.

## Config

### Setting - IP Camera



#### **Insert:**

Click this button and the IP/Video Server Setting panel will pop up. You can add an IP camera to the system using the Setting panel. See next page for details.

#### **Delete:**

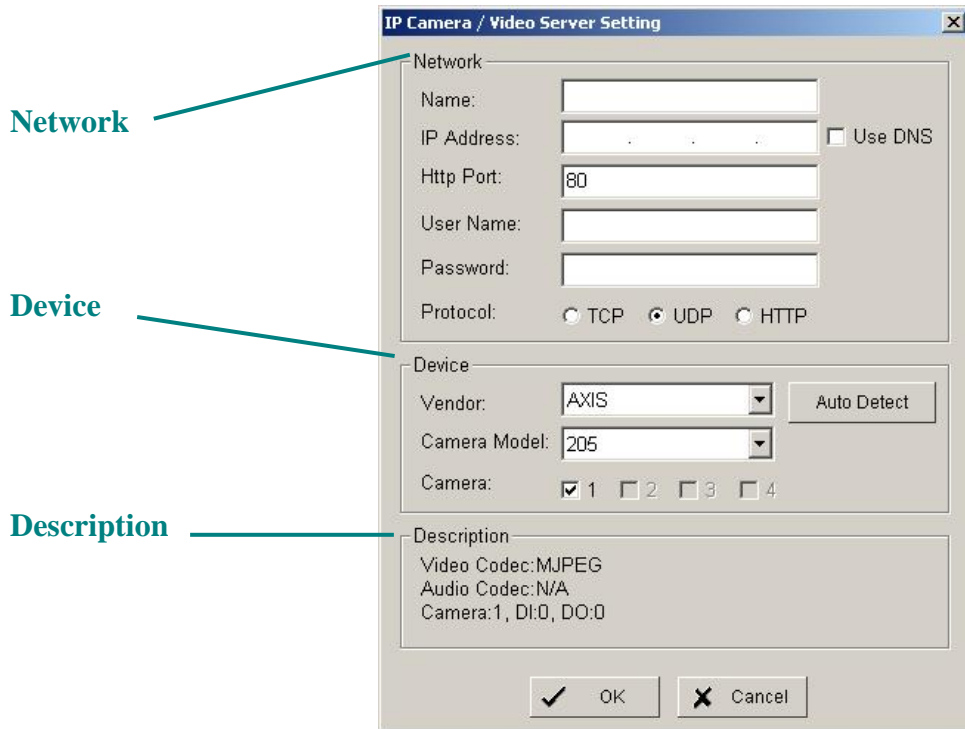
Click this button to delete the selected IP camera(s), click OK and the IP camera(s) will be removed from the system.

#### **Config:**

Click this button and the IP/Video Server Setting panel will pop up. You can modify the IP camera settings using the Setting panel. See next page for details.

## Setting - IP Camera

### IP/Video Server Setting panel



#### **Network:**

Fill up the Network fields (including Name, IP Address, Http Port, User Name, Password and Protocol) referring to the instruction provided by the manufacturer. Check “Use DNS” to use domain name instead of IP address.

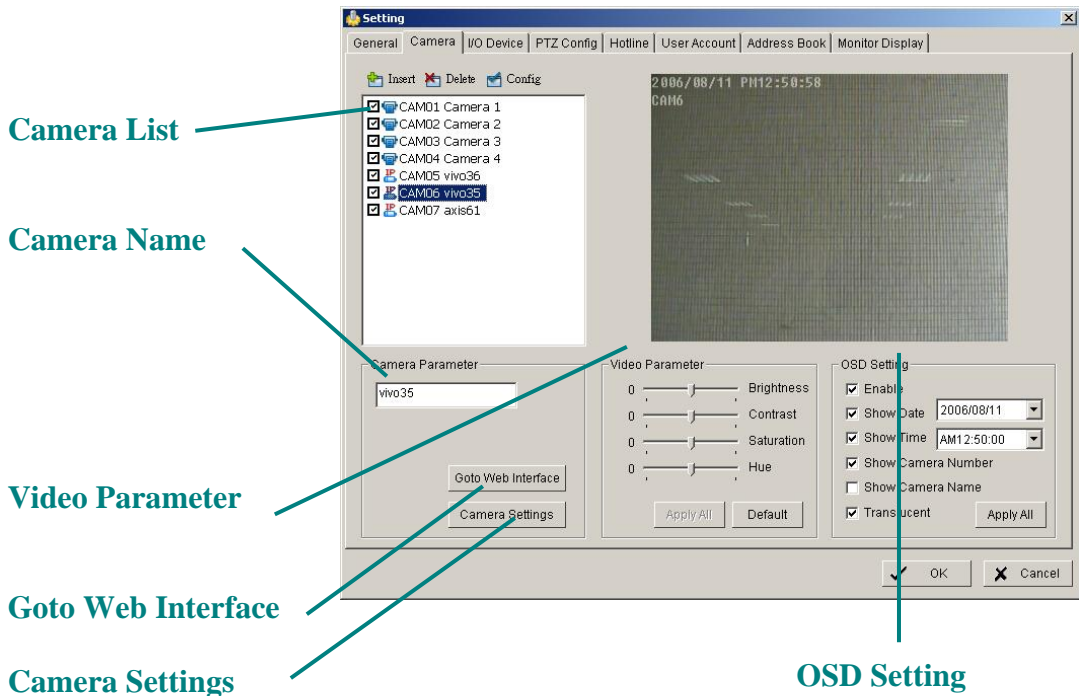
#### **Device:**

Choose the manufacturer of the IP camera from the pull-down menu. Click on “Auto Detect” and the model name will be shown in the box.

**Description:** Shows information about the IP camera.

## Config

## Setting – IP Camera

**Camera List:**

The camera(s) connected to the system will show on the panel, click the name of the camera and then you may adjust the setting of it.

**Camera Name:** Name the camera for your convenience.

**Go to Web Interface:** Go to Web interface to configure the camera settings.

**Camera Settings:** Set the camera parameters offered by the camera vendor.

**Video Parameter:** Adjusts brightness, contrast, saturation, and color hue.

**OSD Setting:**

Select what you want to put in the On Screen Display, showing on the sub-screen of the camera.

## Setting - I/O Device

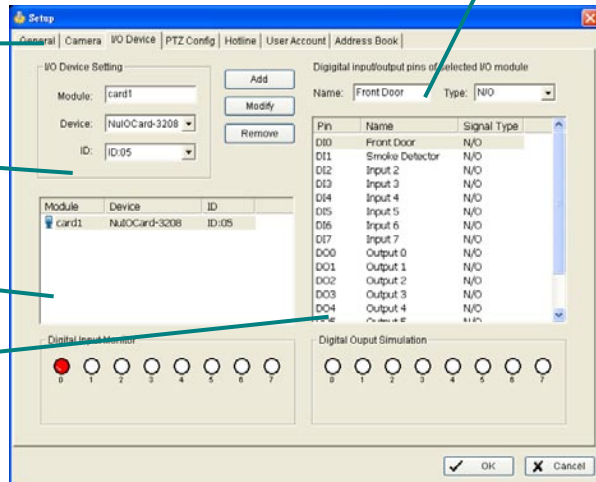
## Device Setting

### Module Setting

### List of devices

### Input Monitor

### Output Monitor



**Module Setting:** To name the module device and ID connecting the digital input/output device(s) to your system.

**I/O Devices:** Shows the device(s) installed to the system.

**ID:** Select the number of the I/O port to which you plug the ribbon cable.

**Input Monitor:** Trigger the digital input device and the related icon will light-up. Used to check if the device is correctly connected or not.

**Output Monitor:** Click on the icon and trigger the digital device connecting to your system to test if it is correctly connected.

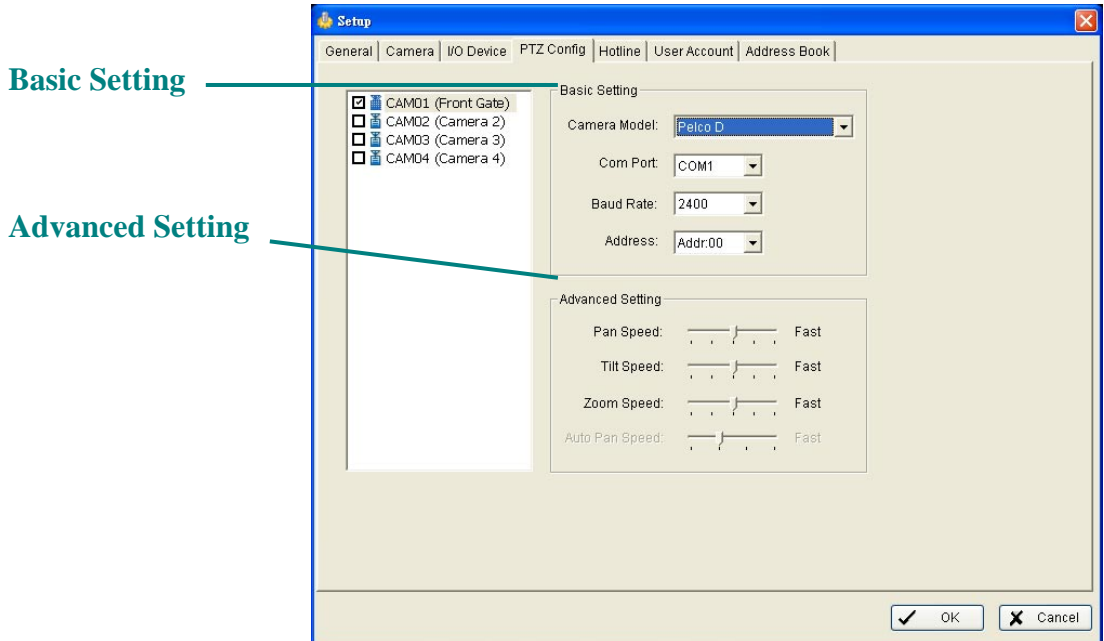
### Device Setting:

**Name:** Name the device (input and output).

**Type:** Select type from the pull-down menu. **N/O** means that the digital signal is

**Opened** in normal condition; **N/C** means that the signal is **Closed** in normal condition.

## Config

**Setting - PTZ Config** (only for PTZ product series)

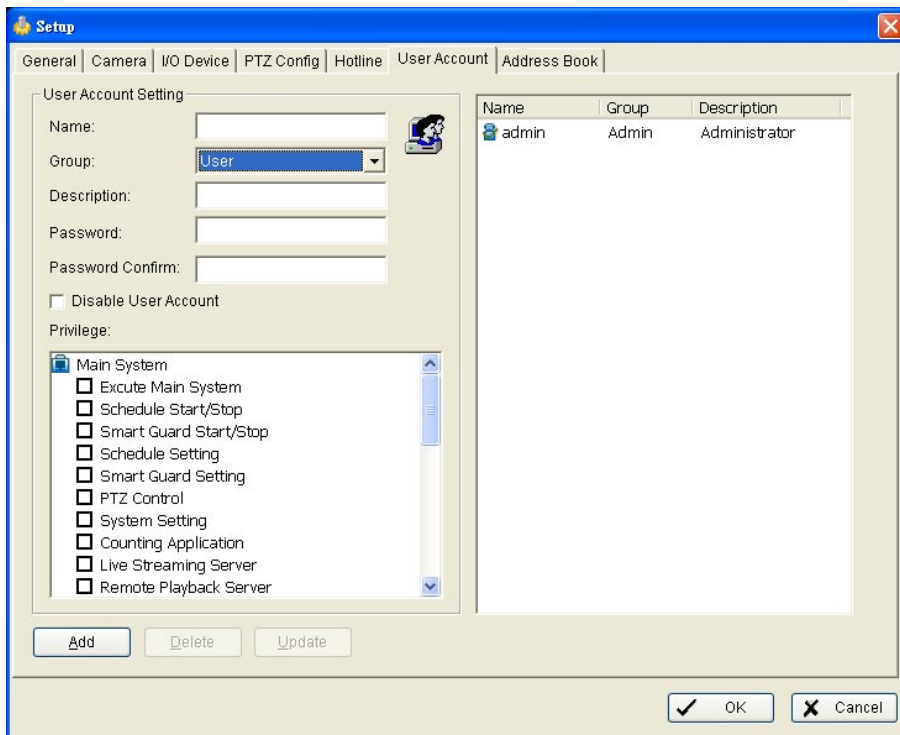
Install the PTZ camera following the instructions of the manufacturer. The PTZ camera is usually connected to the PC through RS-485/RS-422.

Check the box on the camera list to activate the PTZ control function of a PTZ camera.

**Basic Setting:** Select the Camera Model, Com Port, Baud Rate, and Address according to your PTZ camera.

**Advanced Setting:** You may setup the Pan Speed, Tilt Speed, Zoom Speed and Auto Pan Speed.

## Setting - User Account

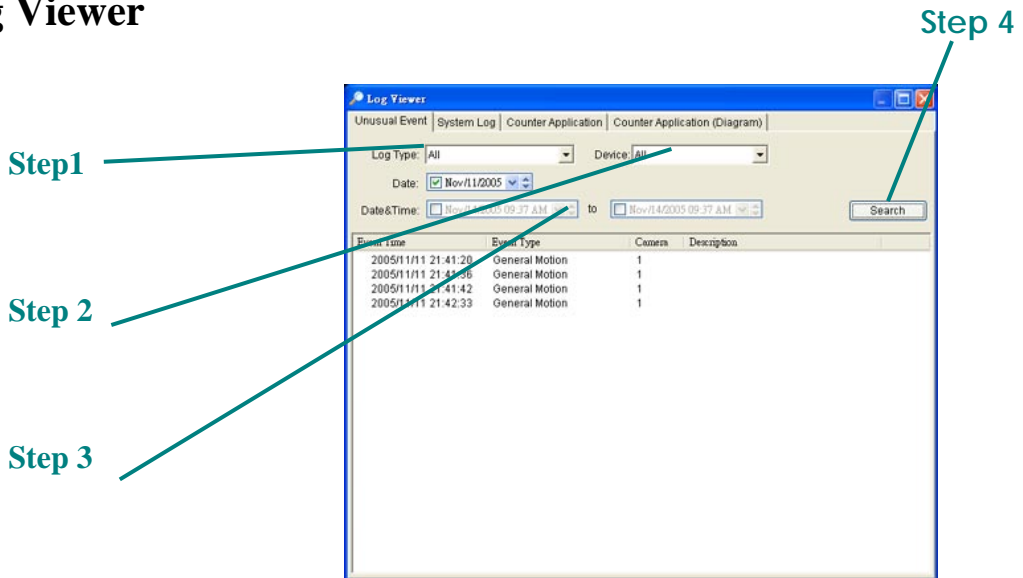


### User Account:

Manage user accounts here. Highlight the account on the list at the right and change the Privilege settings by checking or un-checking the box of each function.

## Config

## Log Viewer

**Unusual Event:**

You can check out the history of Unusual Events that had been detected by the Smart Guard System.

**Step1:** Choose the type of event you want to check or select “All” on the pull-down menu for all types of events.

**Step 2:** Choose from which camera you want to check the event(s) or select “All” for all the channels available.

**Step 3:** You can either view the events on a particular date or during a given time period. To search and view Unusual Event on a particular date, mark the box right next to “Date” and indicate the date you want to check.

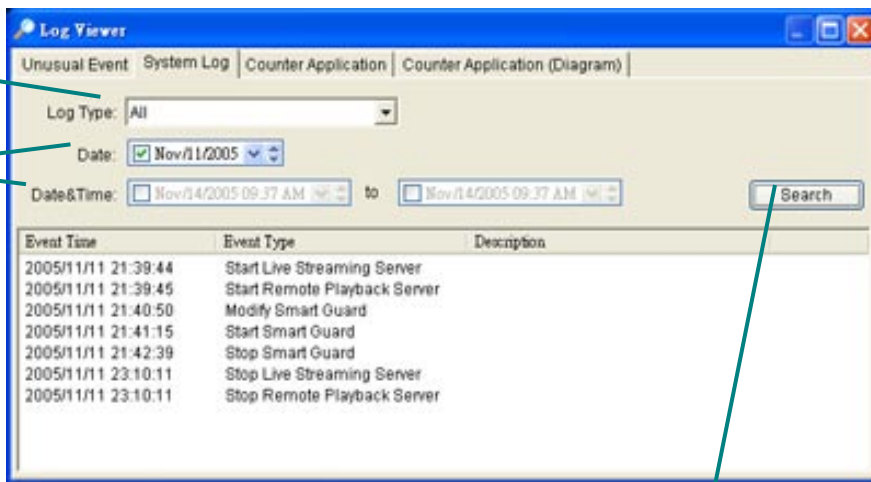
You may also point out two different time points and search for Unusual Event between them. Mark the box in the Date & Time column and then enter the date and time.

**Step 4:** Click Search

## Log Viewer

Step 1

Step 2



Step 3

### System Log:

You can choose the **Log Type** from the pull-down menu, including:

Console Startup, Console Shutdown, User Login, User Logout, Start Schedule, Stop Schedule, Execute Recycle, Execute Backup, Enable Channel, Disable Channel, Start Smart Guard.

**Step1:** Choose the type of event you want to check or select “All” from the pull-down menu for all types of events.

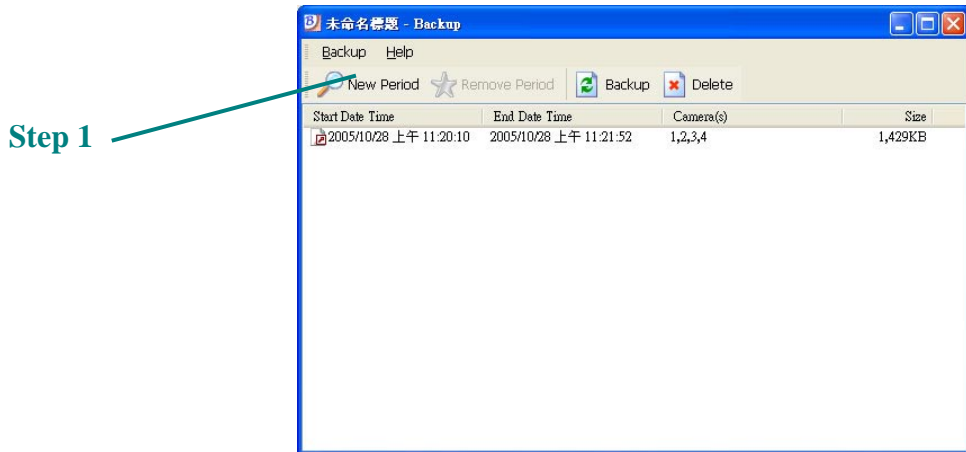
**Step 2:** You can either view the events on a particular date or during a given time period. To search and view Unusual Event on a particular date, check the box right next to **Date** and indicate the date you want to check. You may also point out two different time points and search for Unusual Event between them. Mark the box in the **Date & Time** column and enter the date and time.

**Step 3:** Click **Search**.

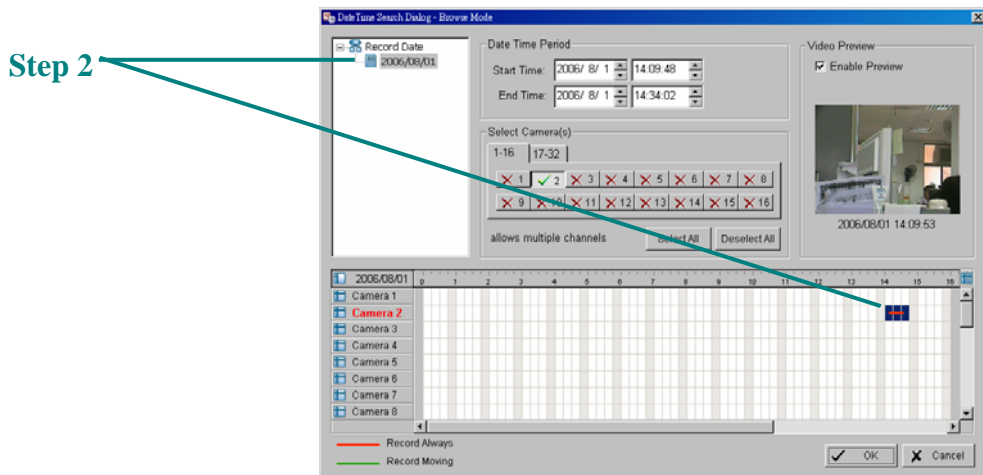
## Config

# Backup

The **Backup Till** function saves video record and the other log information. You can open the Backup file on any PC with Windows OS and have the full function Playback panel on it.



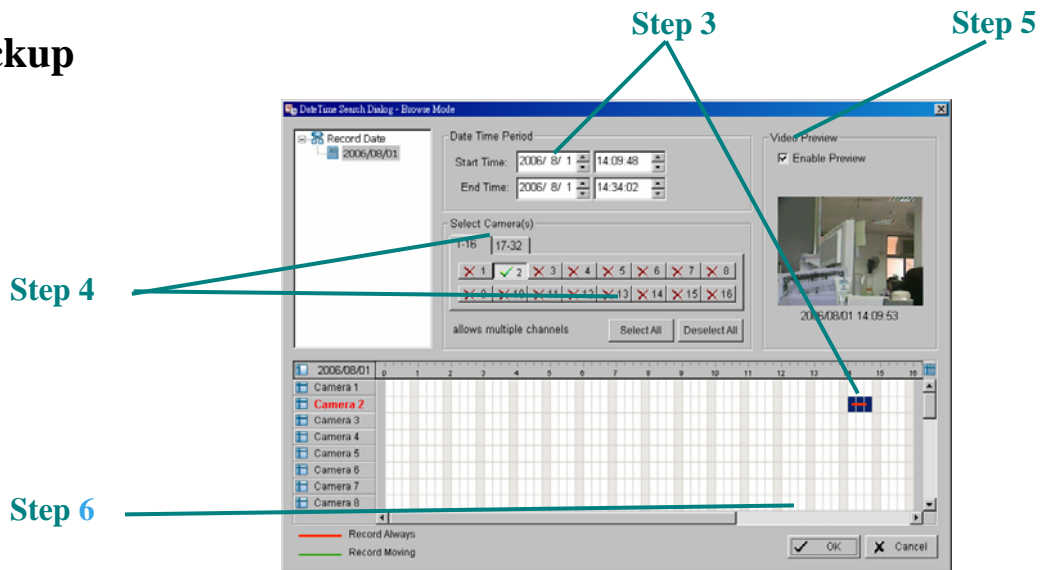
**Step 1:** Click **New Period** to get the Backup panel to add a new time period you want to backup.



**Step 2:** From the window at the top left, select the date you want to backup from, and you will see red/green lines show on the time table implying available data recorded.

Config

Backup



**Step 3:** You can select the data you want to backup by left-clicking and dragging to highlight the time period. Besides using the time-table, you may indicate the time period of the data you want to backup by using Start Time and End Time in Date Time Period section.

**Step 4:** You can click on the camera number icon to add the camera(s) or click Select All to add all the cameras.

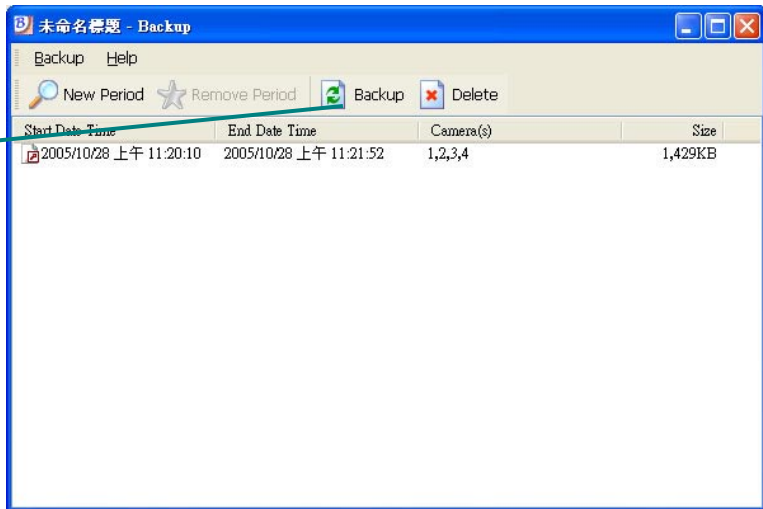
**Step 5:** Check Enable Preview to get the preview of the video you select.

**Step 6:** Click OK when done and go back to the Backup panel.

## Config

## Backup

Step 7



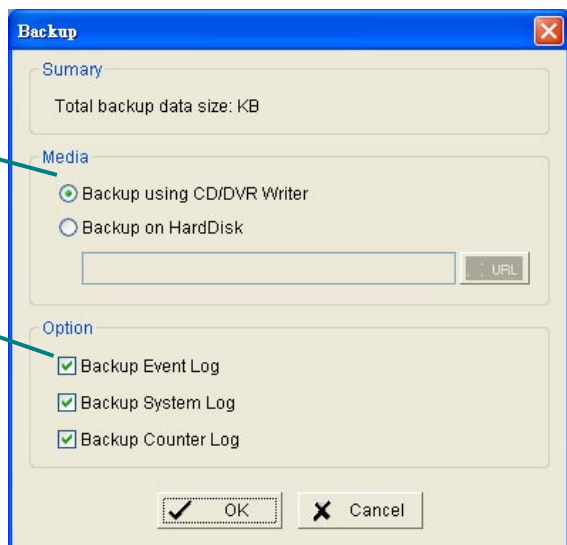
**Step 7:** Click the **Backup** icon and to see the size of the file.

**Step 8:** Choose the path and folder where you want to save the file or burn the file into a CD (direct CD burning for Windows XP only).

**Step 9:** Select which log information you want to backup (Event Log, System Log and/or Counter Log) and click OK.

Step 8

Step 9



## Erase recorded information from the system

**Step 1:** Click New Period to get the Backup panel to add a new time period you want to erase all the data recorded.

**Step 2:** From the window at the top left, select the date you want to remove from, and you will see red/green lines show on the time table implying available data recorded.

**Step 3:** You can select the data you want to erase by left-clicking and dragging to highlight the time period. Besides using the time-table, you may indicate the time period of the data you want erase by using Start Time and End Time in Date Time Period section.

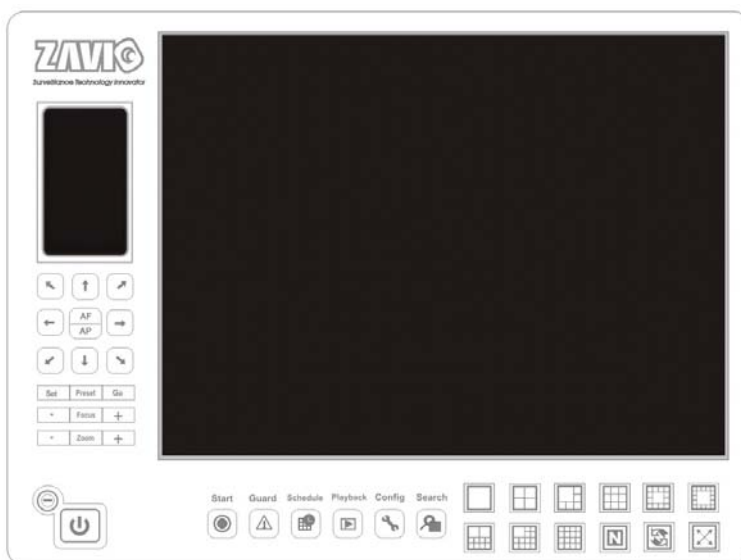
**Step 4:** In Select Camera(s) section, select the camera(s) from which you want to erase or select all the cameras by clicking Select All button.

**Step 5:** Check the box of Enable Preview to get the preview of the video you select.

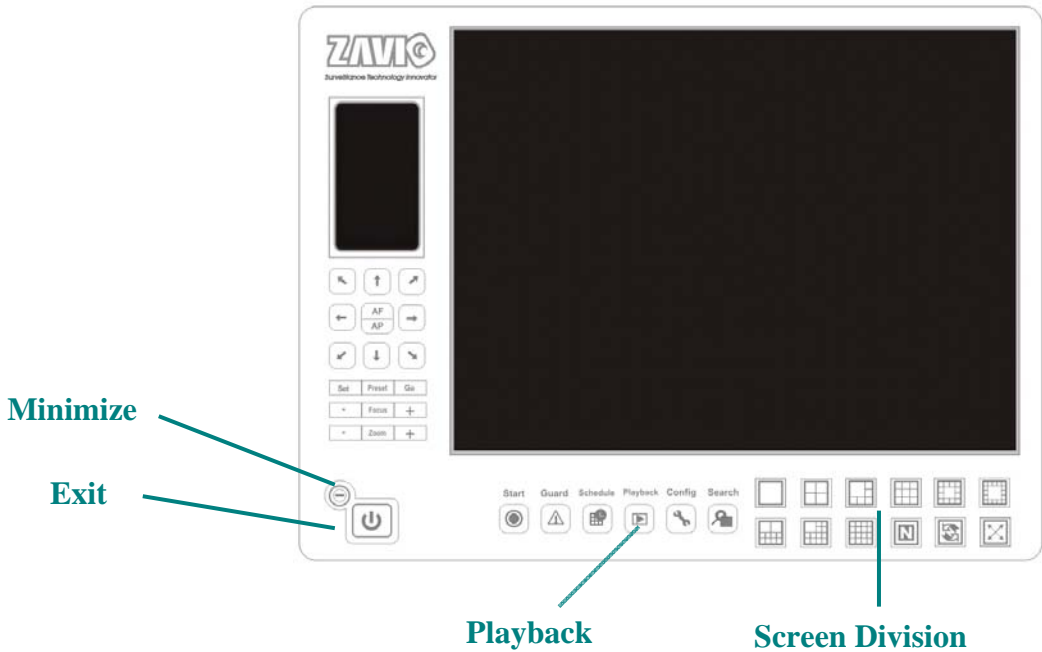
**Step 6:** Click OK when it is done and go back to the Backup panel.

**Step 7:** Click on the Delete icon to erase the data.

# Main Console



**The main operation system. Activate, schedule recording, setup smart guard and configure system setting here.**



**Exit:**  
Shut down SCB Video Surveillance System or log out current user.

**Minimize:** Minimize the Main Console.

**Camera Number / Camera Name:**  
Numbers shown as the port connected; rename the cameras in Config > General Setting.

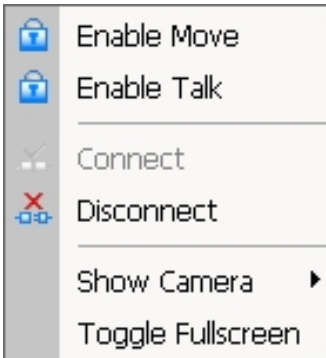
**Screen Division:**  
Allocate the sub-screen displays of cameras by clicking on the icon of desired layout. Quick switch to single camera display by double click the particular sub-screen. Double click the single camera display again to regain previous screen division layout.

**Camera Selection:**  
Choose an area on the display screen and then click on the number of the camera to put it on the chosen area.



## Main Console

### On Screen Menu



Right click on the camera screen and get the On Screen Menu from which you can **Enable Move**, **Enable Talk**, and **Connect / Disconnect** the camera.

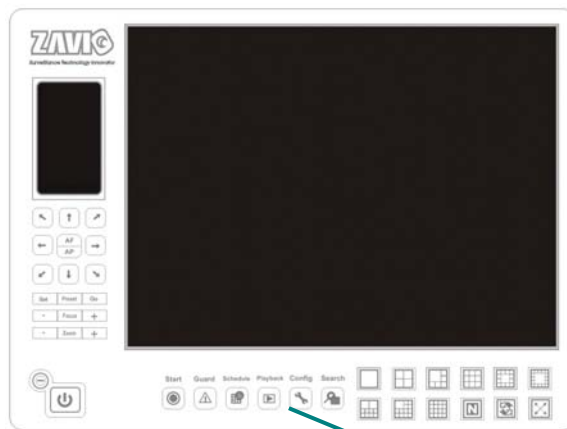
*Note:*

You can only work on current camera after clicking **Enable Move or Enable Talk**. With a PTZ camera locked, you may control it by clicking the screen. You can also talk to a camera with the two-way audio function.

#### Show Camera:

You can also put another camera on the particular screen by selecting a camera from the menu.

**Toggle Full screen:** Click and switch to full screen display.



**Playback**

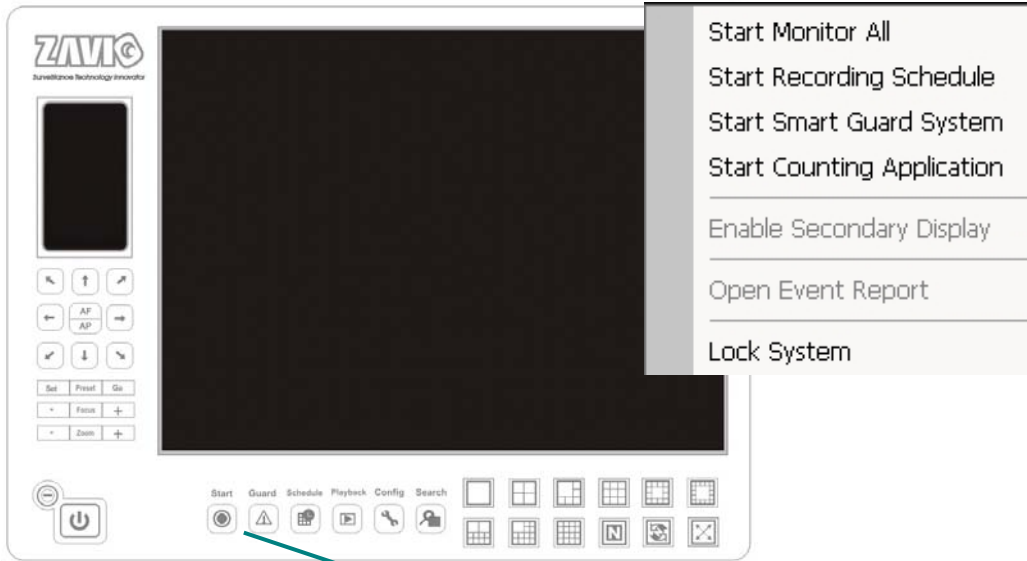
#### Playback:

Click this icon to open Playback Console. You can watch recorded video, search, adjust image from records data, save video/ pictures and print images, check log in information, event records and setup recording function configurations.

*Note :*

ZAVIO free bundled software only provides “General Motion” function in Playback function. If you need more advanced functions, please contact ZAVIO at the following E-mail address: [sales@zavio.com](mailto:sales@zavio.com)

Config



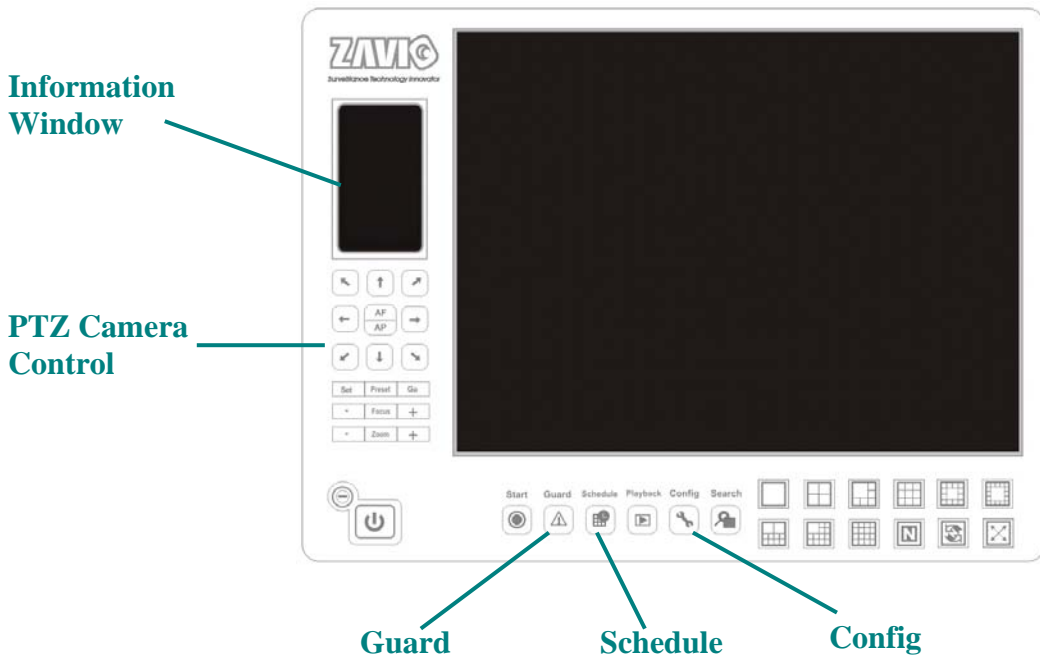
Start

**Start**

**Start:**

Click on the pull down menu to Start/Stop Schedule System, Start/Stop Smart Guard System / deactivate all the functions above. Stop alarm by clicking Cancel All Events.

## Main Console



### Schedule:

Schedule recording time and setup recorder configuration. See Schedule on page 36 for further details.

**Config:** System settings, Backup and Counting Application.

### Information Window:

Shows the system information, including date, time, free HD space, CPU temperature, fan speed, and customized text. You can customize the setting of Information Window in Config > General Setting > General.

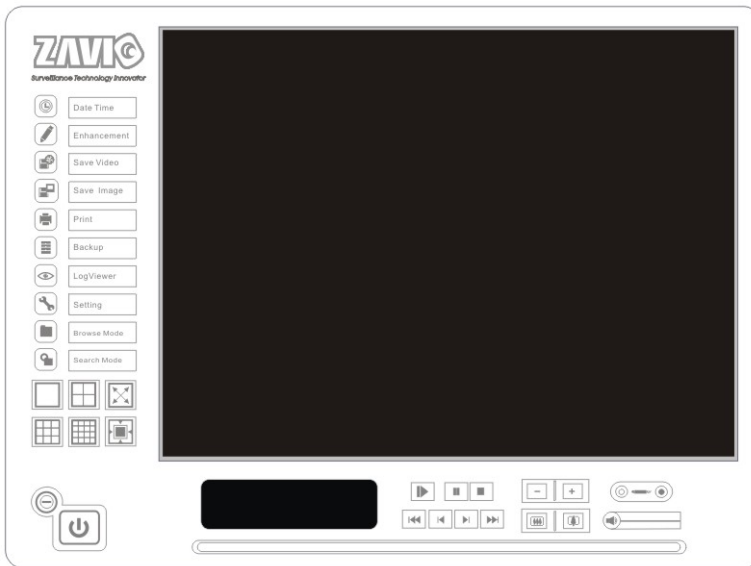
### PTZ Camera Control:

Control the movement of installed PTZ cameras.  
System Info: Day, Time, HD space information.



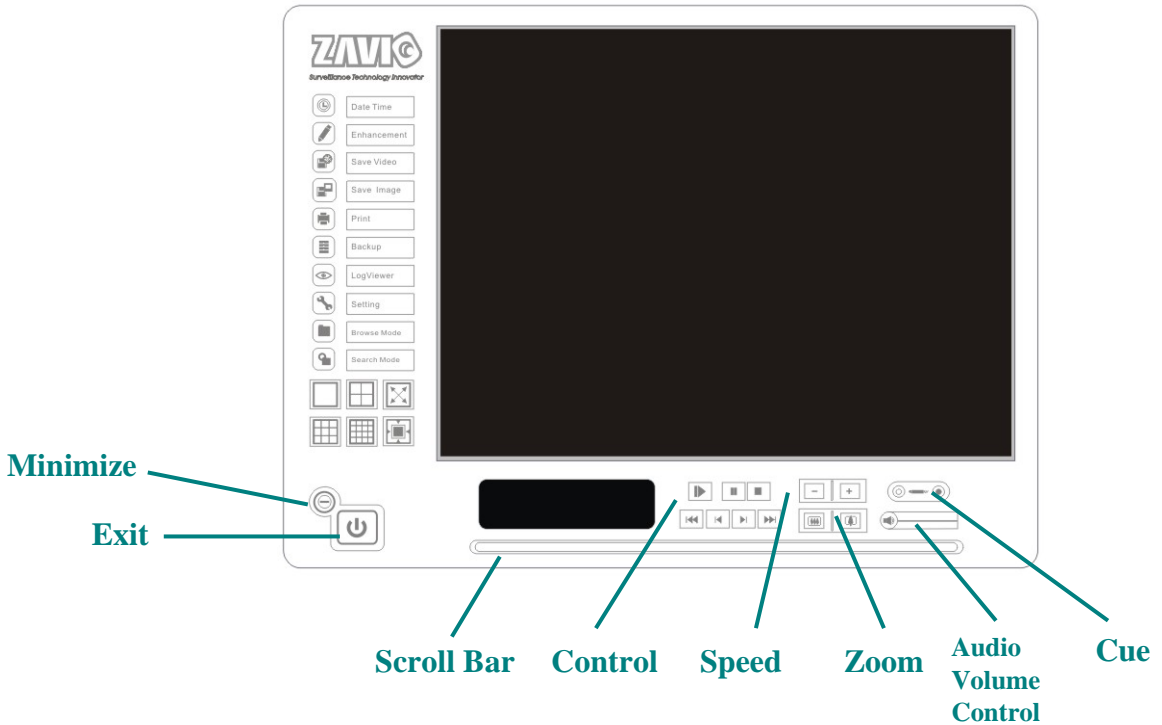
## Playback

# Playback



**Watch recorded video, view and/or search for unusual events and recorded system information.**

## Playback Console



**Scroll Bar:** Quick search on the video, drag it to where you want to review.

**Exit:** Turn off the Playback Console.

**Minimize:** Minimizes the playback Console window.

**Control:** Play, pause and stop the video.

**Cue:**

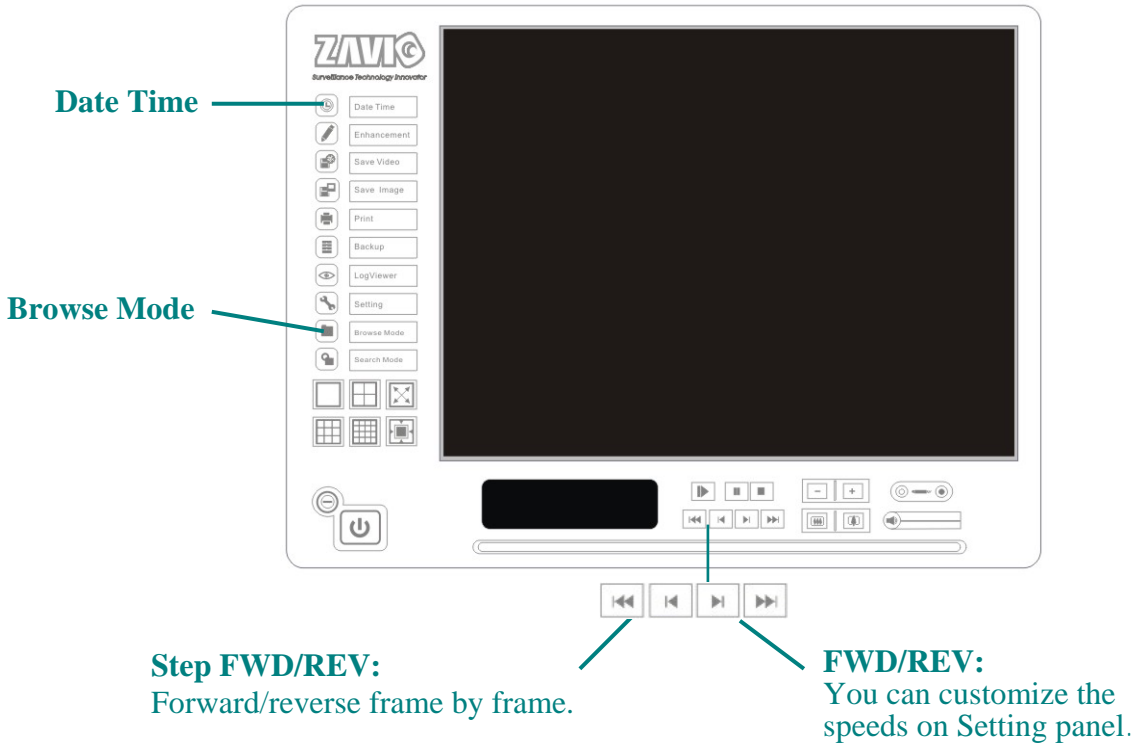
Set up the Cue In and Cue Out points of the clip you want to save as a video clip or a back up file with all the information recorded (including log info, events reported and so.) Cue In and Cue Out time will show on the Playback Information display once they are set.

**Speed:** Adjust the playback speed.

**Zoom:** Zoom in and zoom out. You can get a close up view of the recorded video and move to the spot you want to view by dragging the screen.

## Playback

### Playback Console



**Browse Mode:** Play the recorded video.

**Audio Volume Control:** Adjust the sound volume.

#### Date Time:

Click on the Date Time button to withdraw the video record that you want to review. As you click on the Date Time button, a control panel will show up. Follow the instructions on the next page to withdraw the record.

## Day-Time Panel

### Withdraw the records:

**Step 1:** From the window at the top left of the Day-Time Panel, select the date you want to check, and you will see red/green lines show on the time table implying available recorded video.

**Step 2:** You can select the video clip you want to review by left-clicking and dragging to highlight the time period. Besides using the time-table, you can also indicate the time period of video that you want to see by using the Start Time and End Time in Date Time Period section.

**Step 3:** In Select Camera(s) section, select the camera(s)/channel(s) from which you want to see the video. You can select all cameras by clicking Select All button.

**Step 4:** Check Enable Preview to get the preview of the video you select.

**Step 5:** Click OK when you are done with the settings.

## Playback

## Enhancement

### **General Setting:**

Check the circle and chose whether you want to apply the setting to all the channels or only to those currently shown on the screen.

## Filter Setting

### **Visibility:**

Check the box and adjust the gamma value of the image, which means, you may enhance the image and make it cleaner.

### **Sharpen:**

Check the box to activate the function. Move the control bar to the right to sharpen the image, to the left to soften it.

### **Brightness:**

Check the box to activate the function. Move the control bar to the right to make the image brighter.

### **Contrast:**

Check the box to activate the function. Move the control bar to the right to increase contrast.

### **Grey Scale:**

Check the box to show the record in grey scale mode, which is in black and white.

## Save Video / Save Image

### Save Video

**Step 1:** Choose the camera display you want to save as a video clip.

**Step 2:** Set up the Cue In and Cue Out points, the cue in and cue out time will show up on the display.

**Step 3:** Click Save Video icon, choose the folder where you want to save the file, enter the file name and click SAVE. You may export (save) the record with both audio and video or you can explore the video only.

**Step 4:** Choose the compression format and then save the video.

### Save Image:

**Step 1:** Chose the camera display from which you want to save pictures.

**Step 2:** Click Save Image button when the image you want is on the screen. You may click Pause to freeze the video, use Step Forward/ Step Backward function to find the picture you want to save.

**Step 3:** Choose the folder and the format of image (BMP, JPEG, GIF, PNG or TIFF) you prefer and then click save.

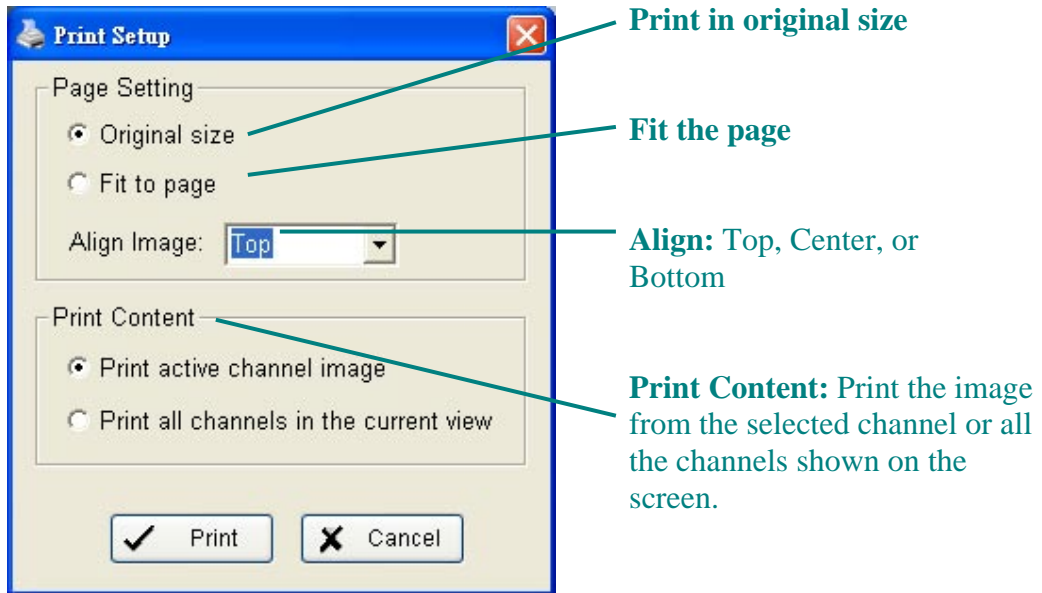
*Note:* If you preset a folder and format that you want to save the images to, you may skip **Step 3**.

---

## Playback

### Print / Backup

#### Print:

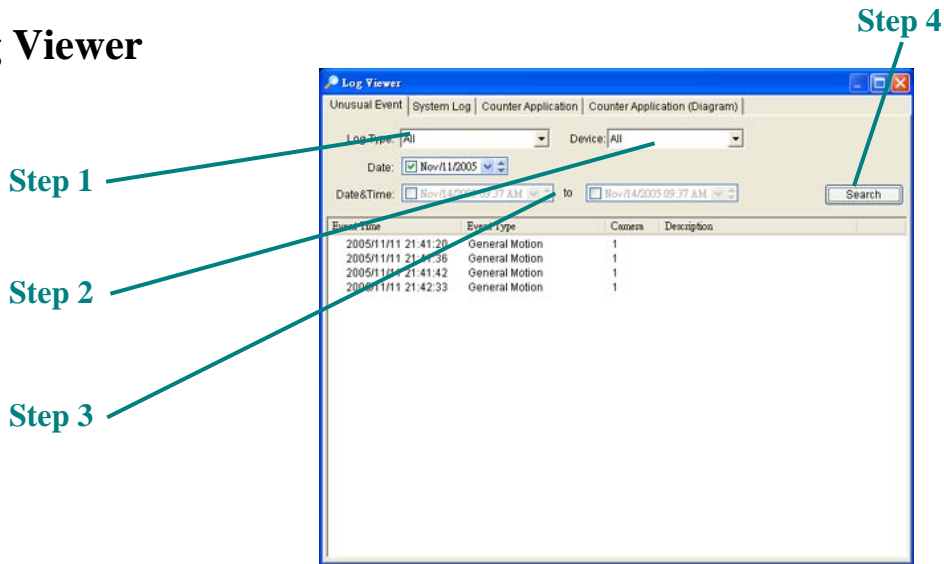


#### Backup:

Different from Save Video, the Backup function saves everything from the Playback panel, including log information.

You can open the Backup file on any PC with Windows OS and have the full function Playback panel on it and take the backup file to elsewhere to work on the recorded video.

## Log Viewer



**Unusual Event:** You can check out the history of Unusual Events that had been detected by the Smart Guard System.

**Step1:** Choose the type of event you want to check or select “All” on the pull-down menu for all types of events.

**Step 2:** Choose from which camera you want to check the event(s) or select “All” for all the channels available.

**Step 3:** You can either view the events on a particular date or during a given time period. To search and view Unusual Event on a particular date, mark the box right after “Date” and indicate the date you want to check.

You may also point out two different time points and search for Unusual Event between them. Mark the box in the Date & Time column and then enter the date and time.

**Step 4:** Click Search

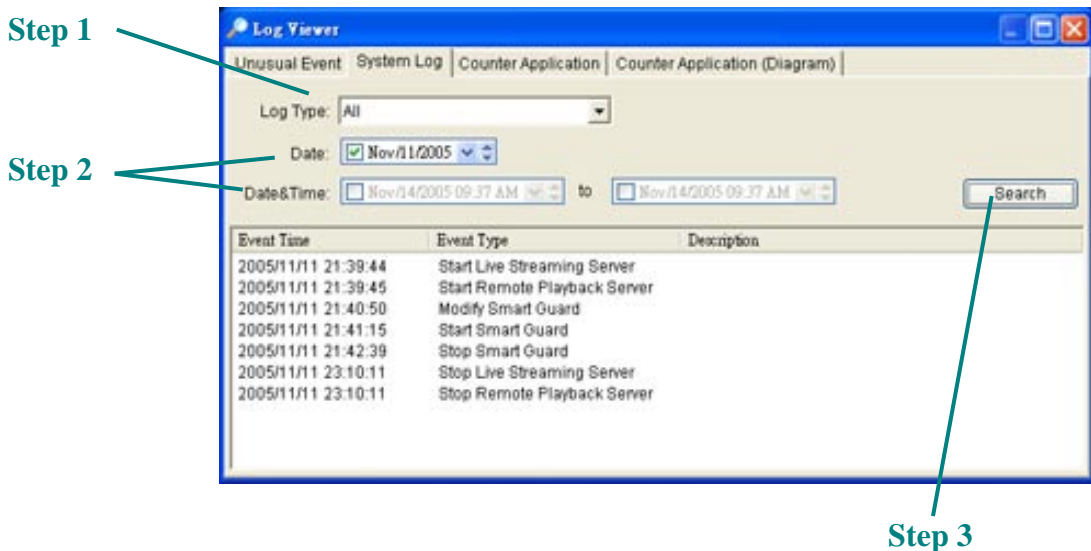
*Note:* When you are working with a video record,

1. Log Viewer will search for Unusual Events in the video record by default (in Date & Time mode), starting from the beginning to the end of the record.

2. There will be an icon on the right of the event time; click on the icon to jump to the point where the Unusual Event took place.

## Playback

### Log Viewer



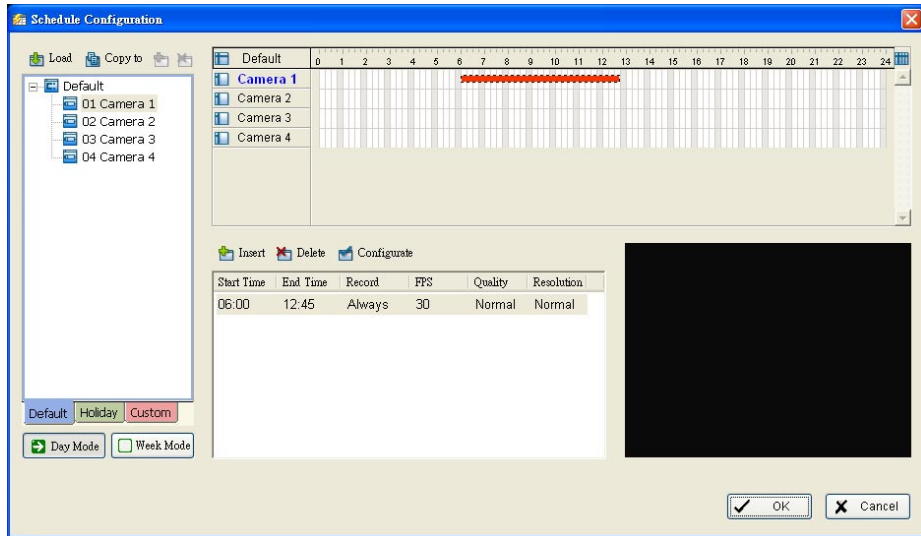
**System Log:** You can choose the **Log Type** from the pull-down menu, including: Console Startup, Console Shutdown, User Login, User Logout, Start Schedule, Stop Schedule, Execute Recycle, Execute Backup, Enable Channel, Disable Channel, and Start Smart Guard.

**Step1:** Choose the type of event you want to check or select “All” on the pull-down menu for all types of events.

**Step 2:** You can either view the events on a particular date or during a given time period. To search and view Unusual Event on a particular date, check the box right next to **Date** and indicate the date you want to check. You may also point out two different time points and search for Unusual Event between them. Mark the box in the **Date & Time** column and then enter the date and time.

**Step 3:** Click **Search**.

# Schedule



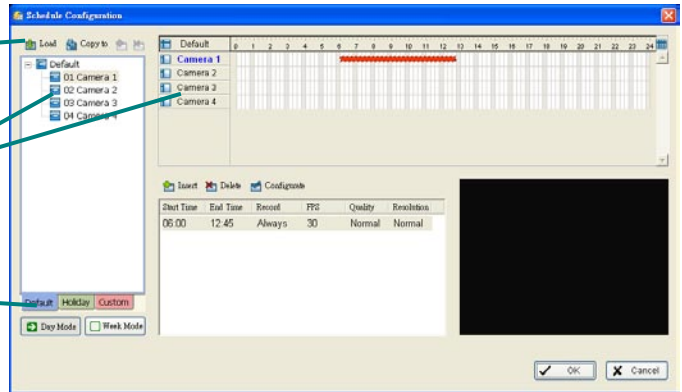
Click on the Schedule icon on the Main Console to open the Schedule configuration panel to setup a time schedule for video recording.

## Live Viewer

**Load**

**Camera / Channel**

**Day Mode**



## Day Mode

Schedule the cameras on a daily basis, which means that the recorder will be turned on and off at the same time everyday, according to the schedule you setup.

To setup the time schedule for each camera, you can

1. **Load** the preset Modes or
2. **Insert** a new schedule manually.

## Load preset Modes

Click on the **Load** icon and get a pull-down menu.

### Regular Mode:

Record 24 hours a day with 30 fps (frames per second), Normal video quality and Normal resolution.

### Office Mode:

Record video from 8 am to 8 pm (08:00 – 20:00, shown as a red bar on Schedule Configuration panel) with 30 fps, Normal video quality and Normal resolution.

### Shop Mode:

Record video from 10 am to 10 pm (10:00 – 22:00) with 30 fps, Normal video quality and Normal resolution.

### High Security Mode:

Record video 24 hours a day with 30 fps, Highest video quality and High resolution.

### Disk Saving Mode:

The system will start recording only when a motion on the screen is detected, 24 hours a day (shown as a green bar on Schedule Configuration panel), with 30 fps, Normal quality and Normal resolution. You can adjust the sensitivity, interval and detection area of motion detection in schedule Configure.

## Live Viewer

### Minor Mode:

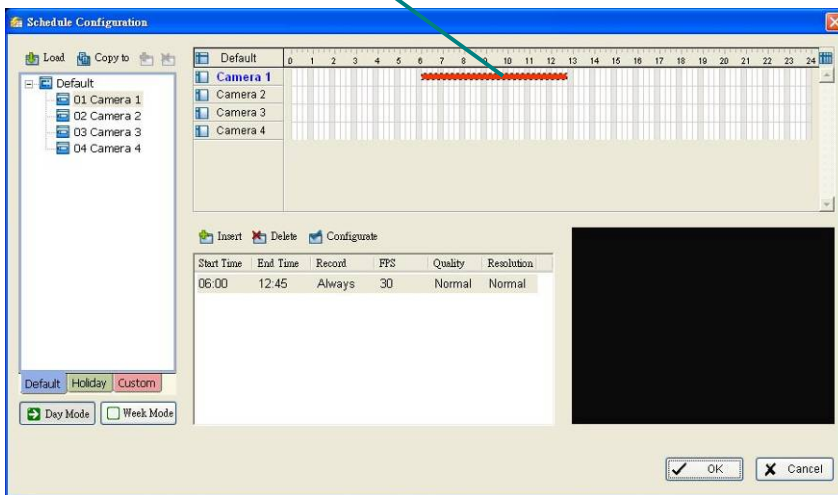
The system will start recording only when a motion on the screen is detected, 24 hours a day (shown as a green bar on Schedule Configuration panel), with 15 fps, Low quality and Low resolution. You can adjust the sensitivity, interval and detection area of motion detection in schedule Configure.

### Adjust the scheduled setting:

Even when you have setup the Modes through the Load function, you can still manually make changes to it.

**Option 1:** Move the cursor to the **Time Bar** to change the length of it or move the bar sideway to change the start and stop points.

### Time Bar

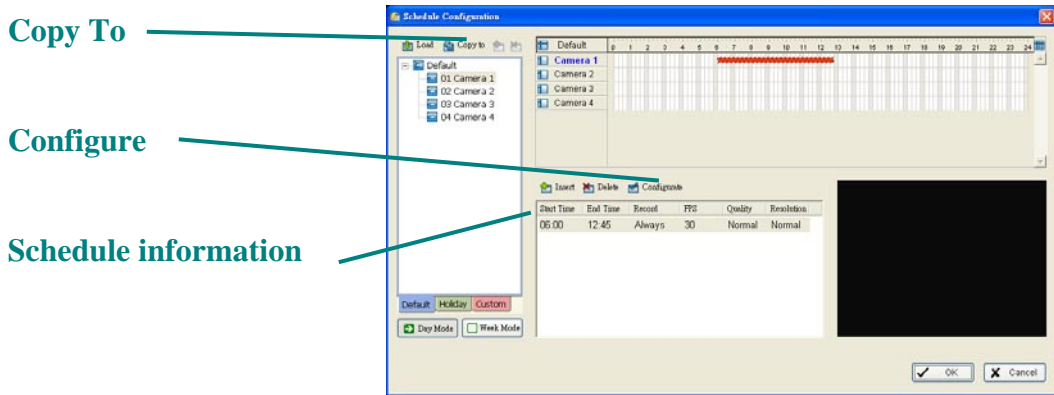


**Option 2:** Click the **Configure** icon or double click **schedule information** on the screen (highlighted in blue), get **Encoding Options** panel and change the setting that you want to.

*Note:* The time schedule setting is based on 15 minutes.

You may setup the schedule for each channel/camera by repeating the process above or applying the setting of a camera to all other cameras.

## Live Viewer



## Manually insert a new schedule

**Step 1:** Left-click and draw the length you want on time table. The scheduled time will show as a grey bar.

**Step 2:** Click on the **Insert** icon and add a new schedule with Regular Mode, which is recording video with 30 fps, Normal video quality and Normal resolution.

**Step 3:** Change to another mode if you want, by clicking on the **Configure** icon or double click the **Schedule information**.

**Step 4:** Click OK.

## Week Mode

### Week Mode:

Schedule the cameras for each day of the week differently. In addition, you may appoint extra holidays in Week Mode.

### Default:

Follow the same process to setup the schedule for every day in a week.

### Holiday:

You may appoint Holiday(s) on which the system will work as the setting of Sunday.

### Custom:

Or you can appoint a particular date(s) on which the system will work on a special schedule different from the others.

## Manually insert a new schedule

You can also setup schedules manually in Week Mode by following the same process as in Day Mode.

**Contact Info.**

# Contact ZAVIO

**Welcome any inquiries !**

www.zavio.com

E-mail : sales@zavio.com

TEL: +886-35 790 275

FAX: +886-36 686 845

Address : No.1, Lising 1st Rd. Science Based Industrial Park, Hsinchu, Taiwan